

# GULLIVER'S TAVERN BANGKOK

## [ HOTEL INFORMATION ]

Gulliver's Tavern Hotel is a brand new boutique hotel conveniently located in Bangkok's trendy Sukhumvit area. Offering modern and clean rooms and amenities, Gulliver's Tavern Hotel provides business people, expatriates and tourists a home away from home at affordable prices.

The Sukhumvit area in many ways epitomizes modern Bangkok. Characterized by high rise buildings, air-conditioned shopping centers, stylish restaurants and a wide selection of entertainment venues, the area is conveniently linked to Bangkok's main tourist and commercial areas by the new Skytrain system. The area provides an excellent base for exploring the many sights and sounds of Bangkok.

6/1 Sukhumvit Soi 5 Wattana  
Bangkok 10110

TEL : (66) 2 655 7312

(66) 2 655 7313

(66) 2 655 7314

FAX : (66) 2 655 7315

[www.gulliverhotel.com](http://www.gulliverhotel.com)

e-mail : [info@gulliverhotel.com](mailto:info@gulliverhotel.com)

## [ ROOM INFORMATION ]

NUMBER OF FLOORS 5

NUMBER OF ROOMS 52

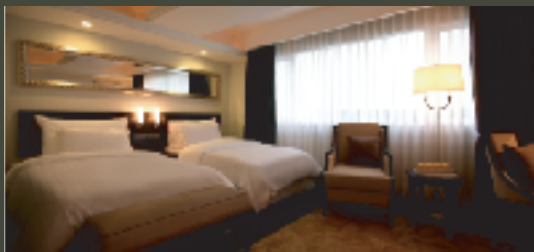
Room Category Units

Studio 4

Standard 21

Superior 26

Gulliver's Suite 1



## [ ROOM CONFIGURATIONS ]

Room Type **STUDIO**

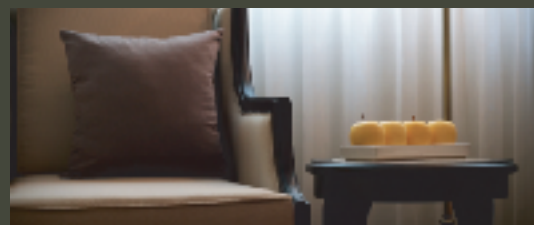
Size 20 sqm

Studio Room Features with Standing Shower, Queen Size Bed, 32" Plasma TV. Safety Deposit Box, Coffee and Tea set. Hi-speed internet.

Room Type **STANDARD**

Size 19 - 24 sqm

Each Standard Room Features with Standing Shower, Queen Size Bed or Twin Bed, 32" Plasma TV. Safety Deposit Box, Coffee and Tea set. Hi-speed internet.



Room Type **SUPERIOR**

Size 19 - 28 sqm

Each Superior Room Features with Standing Shower, Queen Size Bed or Twin Bed, 32" Plasma TV. with DVD Player. Safety Deposit Box, Coffee and Tea set. Hi-speed internet.

Room Type **GULLIVER'S SUITE**

Size 61 sqm

Gulliver's Suite Features with Living Room, Bathtub, Standing Shower, King Size Bed, 32" Plasma TV. with DVD Player. Safety Deposit Box, Coffee and Tea set. Hi-speed internet.

## [ ROOM TYPE SUMMARY ]

	Twin	Queen	King	Total
Studio	0	4	0	4
Standard	6	15	0	21
Superior	14	12	0	26
Suite	0	0	1	1
Total	20	1	1	52

## [ OUR FACILITIES ]

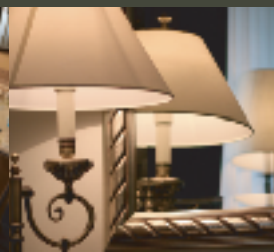
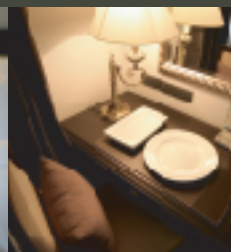
- Swimming Pool
- Gulliver Bar & Restaurant
- Business Centre
- Lobby Bar
- Wireless broadband Internet services throughout lobby
- Local and satellite TV

## [ OUR SERVICES ]

- Limousine Services
- Tour & Travel agency
- Laundry & Dry Cleaning Services
- 24 hrs. security

## [ YOUR IN-ROOM AMENITIES ]

- Free broadband Internet access
- Solid oak hardwood floors
- Double duck down duvet and pillows
- Air ball fiber mattress topper
- 32" Flat Screen Plasma TV
- DVD Player (Superior room / Gulliver's Suite)
- Personal safety deposit box
- Bathrobe and slipper
- IDD telephone
- Air conditioning
- Mini Bar
- Coffee and tea set
- Spa bathing supplies
- Standing shower
- Cotton linen
- Stationary
- Hair dryer
- Room service



# GULLIVER'S TAVERN BANGKOK



## [ OPERATION HOURS ]

Check-in 3:00 pm  
Check-out 12:00 noon

Late check request will only be considered on the day of departure and cannot be extended beyond 1:00 pm.

Breakfast hours  
6:30 – 10:30 am

Room dining service  
10:30 am – midnight

## [ TRANSPORTATION ]

Suvarnabhumi International Airport

Distance - 32 km | Time - 30 min by Taxi

Skytrain Station (NA NA BTS station)

Distance - 250 m | Time - 3 min by Walk

Silom

Distance - 4.6 km | Time - 10 min by Taxi

Siam Square

Distance - 2.7 km | Time - 10 min by BTS

Queen Sirikit National Convention Center

Distance - 3 km | Time - 10 min by Taxi

Subway Station (Sukhumvit MRTA Station)

Distance - 1.5 km | Time - 15 min by Walk

Don Muang Airport

Distance - 23 km | Time - 25 min by Taxi

Between Gulliver's Tavern Hotel and Suvarnabhumi International Airport.

- Limousine Service
- Airport bus
- Taxi

## [ DINING ]

### GULLIVER'S TAVERN PUB & RESTAURANT

#### DINNING ROOM

Seating capacity 50 persons  
Open Daily - 6:00am - 01:00am  
Breakfast 6:30am - 10:30am  
(Mondays to Fridays)  
6:30am - 11:30am  
(Saturdays and Sundays)

#### BAR

Seating capacity 150 persons  
Open Daily - 11:00pm - 1:00am



## [ ROOM SERVICE ]

6:30 am - 12:00 am

## [ IMPORTANT NOTES ]

Gulliver's Tavern Hotel

- provides monthly room rates.
- is not a wheelchair accessible Hotel.
- is a non-smoking hotel.

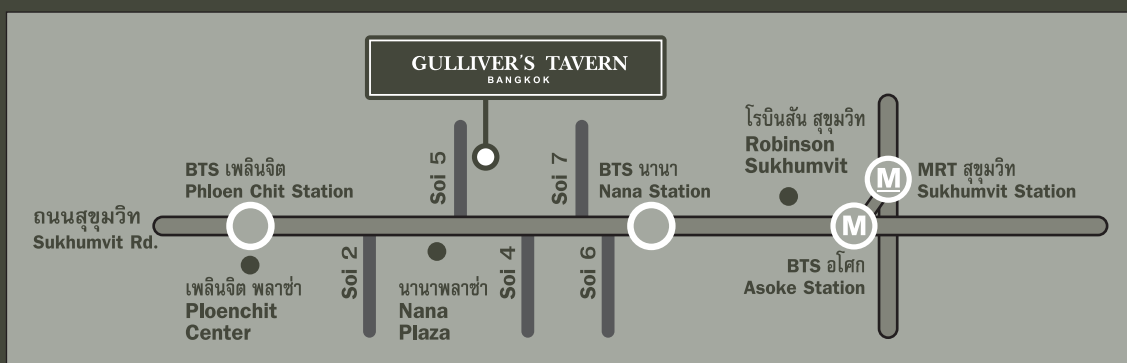
Smoking is only allowed in designated smoking areas.

Gulliver's Tavern Hotel is a member of Gulliver's Traveler's Tavern pub and restaurant.



[www.gulliverbangkok.com](http://www.gulliverbangkok.com)

All major credit cards accepted.



All information is correct at the time of print.

Gulliver's Tavern Hotel reserves the right to amend the amenities and facilities available at their discretion.

